



Qty: (2) Bag - Pole - Black
P/N: BSM2-B-P400-BAG-BLK
1.1 lbs / .5 kg



Qty: (1) Pole - Base - AL2 - Blue Insert
P/N: BSM2-P-M201-AL2-00B
3.3 lbs / 1.5 kg



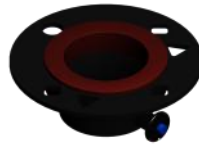
Qty: (13) Pole - Center Mast - AL2
P/N: BSM2-P-M101-AL2-000
3.3 lbs / 1.5 kg (each)



Qty: (1) Tripod with Bolted Lift Winch
P/N: BSM2-K-T200-LFT-000
35.0 lbs / 15.2 kg



Qty: (1) Wheeling Carry Bag
54 x 14 x 14 Inches
P/N: BSM2-B-P305-BAG-3WH
23.7 lbs / 10.8 kg



Qty: (1) Primary Guy Ring
P/N: BSM2-A-M100-RNG-PN0
0.6 lbs / 0.3 kg



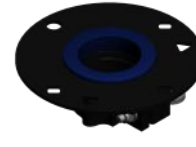
Qty: (4) 14M - Guy Rope - Primary
P/N: BSMU-P-G614-PRI-RED
0.6 lbs / 0.3 kg (each)



Qty: (1) Pole - AL2 - Mounting 18 Inch
P/N: BSM2-A-M118-00P-AL2
1.3 lbs / 0.6 kg



Qty: (1) Reference Pack - Lift
P/N: BSM2-L-M503-PAC-000
0.7 lbs / 0.3 kg



Qty: (1) Secondary Guy Ring
P/N: BSM2-A-M100-RNG-CM1
1.0 lbs / 0.5 kg



Qty: (4) 14M - Guy Rope - Secondary
P/N: BSMU-P-G614-2ND-BLU
0.6 lbs / 0.3 kg (each)



Qty: (1) Base Plate - Lift Kit
P/N: BSM2-P-T705-BSP-000
1.6 lbs / 0.7kg



Qty: (1) Winch - Handle
P/N: BSM2-P-W500-HDL-010
0.6 lbs / 0.3 kg



Qty: (1) Bag - Small Accessory - Black
P/N: BSM2-B-P610-BAG-BLK
1 lbs / 0.5 kg



Qty: (1) Hammer - 3 lbs.
P/N: BSM2-V-P350-HMR-000
3.4 lbs / 1.5 kg



Qty: (8) Stake - Zinc Plated - Tripod
P/N: BSM2-P-S800-STA-000
0.9 / 0.4 kg (each)



Qty: (2) Tool - Stake Extractor
P/N: BSM2-P-S801-PUL-000
0.7 / 0.3 kg (each)



Qty: (8) Stake - Galvanized - Guying
P/N: BSM2-P-G700-STA-000
0.9 lbs / 0.4 kg (each)



WEIGHT	137.9 lbs / 62.6 kg
WIND RATING	70.0 mph / 112.7 km/h
MAX LOAD	25.0 lbs / 11.3 kg

BlueSky Mast, Inc.
1515 Gunn Hwy
Odessa, FL 33556
www.blueskymast.com
sales@blueskymast.com

Phone: 877-411-6278
CAGE: 3JWX5

BLUE SKY MAST
elevating solutions™

TITLE
AL2 - LIFT SERIES - 14 METERS (43.5 FT.)

PART NUMBER BSM2-W-L214-AL2-000	REV F
--	------------------------

(c) Copyright 2005-12 Allendale, LLC All Rights Reserved.
This specification is subject to change without notice.
DRAWING SCALE NONE. DIMENSIONS IN INCHES.