



Qty: (2) Bag - Pole - Black  
P/N: BSM2-B-P400-BAG-BLK  
1.1 lbs / .5 kg



Qty: (1) Pole - Base - AL2 - Blue Insert  
P/N: BSM2-P-M201-AL2-00B  
3.3 lbs / 1.5 kg



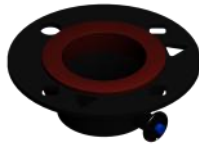
Qty: (10) Pole - Center Mast - AL2  
P/N: BSM2-P-M101-AL2-000  
3.3 lbs / 1.5 kg (each)



Qty: (1) Tripod with Bolted Lift Winch  
P/N: BSM2-K-T200-LFT-000  
35.0 lbs / 15.2 kg



Qty: (1) Wheeling Carry Bag  
54 x 14 x 14 Inches  
P/N: BSM2-B-P305-BAG-3WH  
23.7 lbs / 10.8 kg



Qty: (1) Primary Guy Ring  
P/N: BSM2-A-M100-RNG-PN0  
0.6 lbs / 0.3 kg



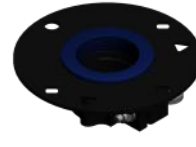
Qty: (4) 11M - Guy Rope - Primary  
P/N: BSMU-P-G611-PRI-RED  
0.6 lbs / 0.3 kg (each)



Qty: (1) Pole - AL2 - Mounting 18 Inch  
P/N: BSM2-A-M118-00P-AL2  
1.3 lbs / 0.6 kg



Qty: (1) Reference Pack - Lift  
P/N: BSM2-L-M503-PAC-000  
0.7 lbs / 0.3 kg



Qty: (1) Secondary Guy Ring  
P/N: BSM2-A-M100-RNG-CM1  
1.0 lbs / 0.5 kg



Qty: (4) 11M - Guy Rope - Secondary  
P/N: BSMU-P-G611-2ND-BLU  
0.6 lbs / 0.3 kg (each)



Qty: (1) Base Plate - Lift Kit  
P/N: BSM2-P-T705-BSP-000  
1.6 lbs / 0.7kg



Qty: (1) Winch - Handle  
P/N: BSM2-P-W500-HDL-010  
0.6 lbs / 0.3 kg



Qty: (1) Bag - Small Accessory - Black  
P/N: BSM2-B-P610-BAG-BLK  
1 lbs / 0.5 kg



Qty: (1) Hammer - 3 lbs.  
P/N: BSM2-V-P350-HMR-000  
3.4 lbs / 1.5 kg



Qty: (8) Stake - Zinc Plated - Tripod  
P/N: BSM2-P-S800-STA-000  
0.9 / 0.4 kg (each)



Qty: (2) Tool - Stake Extractor  
P/N: BSM2-P-S801-PUL-000  
0.7 / 0.3 kg (each)



Qty: (8) Stake - Galvanized - Guying  
P/N: BSM2-P-G700-STA-000  
0.9 lbs / 0.4 kg (each)



<b>WEIGHT</b>	128.0 lbs / 58.1 kg
<b>WIND RATING</b>	70.0 mph / 112.7 km/h
<b>MAX LOAD</b>	40.0 lbs / 18.1 kg

BlueSky Mast, Inc.  
1515 Gunn Hwy  
Odessa, FL 33556  
www.blueskymast.com  
sales@blueskymast.com

Phone: 877-411-6278  
CAGE: 3JWX5

**BLUE SKY MAST**  
elevating solutions™

**TITLE**  
AL2 - LIFT SERIES - 11 METERS (34.5 FT.)

<b>PART NUMBER</b>	<b>REV</b>
<b>BSM2-W-L211-AL2-000</b>	<b>F</b>

(c) Copyright 2005-12 Allendale, LLC All Rights Reserved.  
This specification is subject to change without notice.  
DRAWING SCALE NONE. DIMENSIONS IN INCHES.