



Qty: (1) Bag - Pole - Black  
P/N: BSM2-B-P400-BAG-BLK  
1.1 lbs / .5 kg



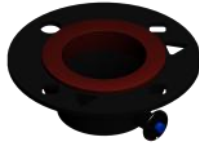
Qty: (1) Pole - Base - AL2 - Blue Insert  
P/N: BSM2-P-M201-AL2-00B  
3.3 lbs / 1.5 kg



Qty: (9) Pole - Center Mast - AL2  
P/N: BSM2-P-M101-AL2-000  
3.3 lbs / 1.5 kg (each)



Qty: (1) Tripod with Bolted Lift Winch  
P/N: BSM2-K-T200-LFT-000  
35.0 lbs / 15.2 kg



Qty: (1) Primary Guy Ring  
P/N: BSM2-A-M100-RNG-PN0  
0.6 lbs / 0.3 kg



Qty: (1) Pole - AL2 - Mounting 18 Inch  
P/N: BSM2-A-M118-00P-AL2  
1.3 lbs / 0.6 kg



Qty: (1) Reference Pack - Lift  
P/N: BSM2-L-M503-PAC-000  
0.7 lbs / 0.3 kg



Qty: (4) 10M - Guy Rope - Primary  
P/N: BSMU-P-G610-PRI-RED  
0.6 lbs / 0.3 kg (each)



Qty: (1) Base Plate - Lift Kit  
P/N: BSM2-P-T705-BSP-000  
1.6 lbs / 0.7kg



Qty: (1) Winch - Handle  
P/N: BSM2-P-W500-HDL-010  
0.6 lbs / 0.3 kg



Qty: (1) Wheeling Carry Bag  
54 x 14 x 14 Inches  
P/N: BSM2-B-P305-BAG-3WH  
23.7 lbs / 10.8 kg



Qty: (1) Bag - Small Accessory - Black  
P/N: BSM2-B-P610-BAG-BLK  
1 lbs / 0.5 kg



Qty: (1) Hammer - 3 lbs.  
P/N: BSM2-V-P350-HMR-000  
3.4 lbs / 1.5 kg



Qty: (8) Stake - Zinc Plated - Tripod  
P/N: BSM2-P-S800-STA-000  
0.9 / 0.4 kg (each)



Qty: (2) Tool - Stake Extractor  
P/N: BSM2-P-S801-PUL-000  
0.7 / 0.3 kg (each)



Qty: (4) Stake - Galvanized - Guying  
P/N: BSM2-P-G700-STA-000  
0.9 lbs / 0.4 kg (each)



NSN:  
5985-01-645-0431

**WEIGHT**  
116.6 lbs / 52.9 kg  
**WIND RATING**  
70.0 mph / 112.7 km/h  
**MAX LOAD**  
50.0 lbs / 22.7 kg

BlueSky Mast, Inc.  
1515 Gunn Hwy  
Odessa, FL 33556  
www.blueskymast.com  
sales@blueskymast.com

Phone: 877-411-6278  
CAGE: 3JWX5

**BLUE SKY MAST**  
elevating solutions™

**TITLE**  
AL2 - LIFT SERIES - 10 METERS (31.5 FT.)

**PART NUMBER**  
BSM2-W-L210-AL2-000

**REV**  
F

(c) Copyright 2005-12 Allendale, LLC All Rights Reserved.  
This specification is subject to change without notice.  
DRAWING SCALE NONE. DIMENSIONS IN INCHES.