

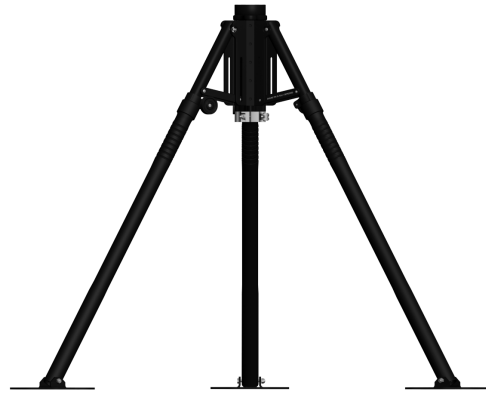
Qty: (1) Bag - Pole - Black  
P/N: BSM2-B-P400-BAG-BLK  
1.1 lbs / 0.5 kg (each)

Qty: (1) Pole - Base - AL1 w Base Plate  
BSM2-P-M201-AL1-00P  
2.7 lbs / 1.2 kg

Qty: (8) Pole - Center Mast - AL1  
P/N: BSM2-P-M101-AL1-000  
1.9 lbs / 0.9 kg (each)



Qty: (1) Pole - AL1 - Mounting 18 Inch  
P/N: BSM2-A-M118-00P-AL1  
0.7 lbs / 0.3 kg



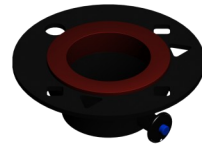
Qty: (1) Tripod with Base Plates  
P/N: BSM2-P-T200-POD-000  
18.0 lbs / 8.2 kg



Qty: (1) Reference Pack - Standard  
P/N: BSM2-L-M501-PAC-000  
0.7 lbs / 0.3 kg



Qty: (1) Wheeling Carry Bag  
54 x 14 x 14 Inches  
P/N: BSM2-B-P305-BAG-3WH  
23.7 lbs / 10.8 kg



Qty: (1) Primary Guy Ring  
P/N: BSM2-A-M100-RNG-PN0  
0.6 lbs / 0.3 kg



Qty: (4) 9M - Guy Rope - Primary  
P/N: BSMU-P-G609-PRI-RED  
0.6 lbs / 0.3 kg (each)



Qty: (1) Bag - Small Accessory - Black  
P/N: BSM2-B-P610-BAG-BLK  
1.0 lbs / 0.4 kg



Qty: (1) Hammer - 3 lbs.  
P/N: BSM2-V-P350-HMR-000  
3.4 lbs / 1.5 kg



Qty: (8) Stake - Zinc Plated - Tripod  
P/N: BSM2-P-S800-STA-000  
0.9 lbs / 0.4 kg (each)



Qty: (2) Tool - Stake Extractor  
P/N: BSM2-P-S801-PUL-000  
0.7 lbs / 0.3 kg (each)



Qty: (4) Stake - Galvanized - Guying  
P/N: BSM2-P-G700-STA-000  
0.9 lbs / 0.4 kg (each)



<b>WEIGHT</b>	81.7 lbs / 37.1 kg
<b>WIND RATING</b>	70.0 mph / 112.7 km/h
<b>MAX LOAD</b>	32.5 lbs / 14.7 kg
BlueSky Mast, Inc. 1515 Gunn Hwy Odessa, FL 33556 www.blueskymast.com sales@blueskymast.com	
Phone: 877-411-6278 CAGE: 3JWX5	

<b>BLUE SKY MAST</b> <i>elevating solutions</i>	
<b>TITLE</b> AL1 - STANDARD SERIES - 9 METERS (28.5 FT.)	
<b>PART NUMBER</b>	<b>REV</b>
<b>BSM2-M-M109-AL1-000</b>	<b>E</b>
(c) Copyright 2005-13 Allendale, LLC All Rights Reserved. This specification is subject to change without notice. DRAWING SCALE NONE. DIMENSIONS IN INCHES.	
<b>SHT 1 OF 1</b>	