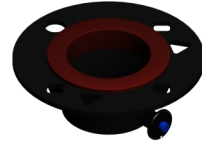


Qty: (1) Bag - Pole - Black
P/N: BSM2-B-P400-BAG-BLK
1.1 lbs / 0.5 kg (each)

Qty: (1) Pole - Base - AL1 w Base Plate
BSM2-P-M201-AL1-00P
2.7 lbs / 1.2 kg

Qty: (6) Pole - Center Mast - AL1
P/N: BSM2-P-M101-AL1-000
1.9 lbs / 0.9 kg (each)



Qty: (1) Primary Guy Ring
P/N: BSM2-A-M100-RNG-PN0
0.6 lbs / 0.3 kg



Qty: (4) 7M - Guy Rope - Primary
P/N: BSMU-P-G607-PRI-RED
0.6 lbs / 0.3 kg (each)



Qty: (1) Bag - Small Accessory - Black
P/N: BSM2-B-P610-BAG-BLK
1.0 lbs / 0.4 kg



Qty: (1) Hammer - 3 lbs.
P/N: BSM2-V-P350-HMR-000
3.4 lbs / 1.5 kg



Qty: (8) Stake - Zinc Plated - Tripod
P/N: BSM2-P-S800-STA-000
0.9 lbs / 0.4 kg (each)



Qty: (2) Tool - Stake Extractor
P/N: BSM2-P-S801-PUL-000
0.7 lbs / 0.3 kg (each)



Qty: (4) Stake - Galvanized - Guying
P/N: BSM2-P-G700-STA-000
0.9 lbs / 0.4 kg (each)



Qty: (1) Pole - AL1 - Mounting 18 Inch
P/N: BSM2-A-M118-00P-AL1
0.7 lbs / 0.3 kg



Qty: (1) Wheeling Carry Bag
54 x 14 x 14 Inches
P/N: BSM2-B-P305-BAG-3WH
23.7 lbs / 10.8 kg



Qty: (1) Tripod with Base Plates
P/N: BSM2-P-T200-POD-000
18.0 lbs / 8.2 kg



Qty: (1) Reference Pack - Standard
P/N: BSM2-L-M501-PAC-000
0.7 lbs / 0.3 kg



WEIGHT
77.9 lbs / 35.3 kg

WIND RATING
70.0 mph / 112.7 km/h

MAX LOAD
37.2 lbs / 17.0 kg

BlueSky Mast, Inc.
1515 Gunn Hwy
Odessa, FL 33556
www.blueskymast.com
sales@blueskymast.com

Phone: 877-411-6278
CAGE: 3JWX5

BLUE SKY MAST elevating solutions™	
TITLE AL1 - STANDARD SERIES - 7 METERS (22.5 FT.)	
PART NUMBER BSM2-M-M107-AL1-000	REV E
(c) Copyright 2005-13 Allendale, LLC All Rights Reserved. This specification is subject to change without notice. DRAWING SCALE NONE. DIMENSIONS IN INCHES.	
SHT 1 OF 1	